

MARCH
AVRIL 2016

#HASHT-ART

SPECIAL ISSUE

**ART BASEL
HONG KONG**
What's expected

**ART PARIS
ART FAIR**
South Korea,
Guest of honour

**REFLETS
DES ARTS**
Appointment with
Mélanie Baltazar

**NOBUYOSHI
ARAKI**
Guimet Museum

DAIDO MORIYAMA
Fondation Cartier

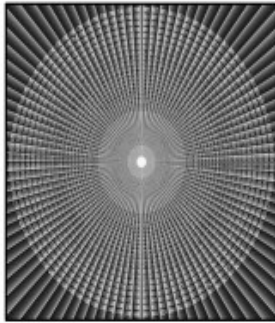
**FRANCE-ASIA,
MARCH/APRIL 2016 :**
The Arts weeks

SOUTH KOREAN ARTISTS AND GALLERIES AT ART PARIS ART FAIR

South Korean artists and galleries at à ART PARIS ART FAIR

IFA GALLERY

Brussels, Belgique et Shanghai, Chine :



Gao Brothers
The Utopia of Construction No. 9, 2014
Credits : ifa gallery

Created by Alexis Kuzmin-Karavaïeff in 2006 in Shanghai, ifa gallery moved to Brussels in 2013. It offers a dynamic programming with Korean artists, more artists she discovered in China and the region.

For this new edition of Art Paris, ifa gallery imagined exposure to graphic dimensions. The visitor escapes to a parallel universe where the lines are dancing, structures and colors fit together fleurteent lightly. Three young Korean artists exhibit essentially controlled and sensitive work. Junyon Ban (1978) built and structured forms. heavenly. The works of meticulous and sewn Yulim Song

(1983) seem to suspend time. Jinhwa Jung (1986) paint outside the traditional conventions and forms. Deconstructs the painted subjects led to bold new compositions.



Dai Guangyu
Mountains Beyond Mountains 2, 2014
Credits : ifa gallery

The Chinese side, Dai Guangyu (China, 1955) combines contemporary and traditional art. Zane Mellupe (Latvia, 1981) conceives his art installations involving photographs and mixed media. The Gao Brothers (China, 1956 and 1962), internationally renowned,

question the man's place in society, starting from the Chinese example to achieve a universal understanding.

The painting of Li Chevalier (China, 1961) experimented China relationship ink on canvas, mixed with pigments, minerals, sand and Chinese art elements such as paper and rice calligraphy.



Zane Mellupe
A ferry tale of a memory, 2015
Credits : ifa gallery

#HASHT-ART 14